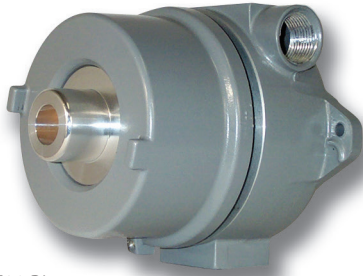


EXP/RL SERIES

Explosion Proof Ringers & Loudspeakers



CE20 Ringer



CE20 Ringer with Horn



SR40/SR60

FEATURES and BENEFITS

CE20 Line Powered Explosion Proof Ringer

- Sound pressure level at one meter, on axis – up to 75 dB without horn (Up to 90 dB with horn)
- Threaded, weather proof enclosure
- Projection horn
- Copper-free aluminum body and cover
- Sintered bronze flame arrestor

SR40/SR60 Explosion Proof Loudspeaker, Ringer, & Loudspeaker/Ringer

- Mounting allows directional adjustments
- Projection horn included
- Powder coated cast aluminum enclosure
- User selectable output power taps
- Threaded end cap for easy installation

INSTALLATION and CONNECTABILITY

CE20 – Line Powered Explosion Proof Ringer

Guardian's CE20 Explosion Proof Ringer utilizes telephone line power, and does not require a separate power source. Maintaining safety standards may require the use of special wiring conduits or other considerations. The CE20 can be ordered separately or as part of an integrated system.

SR40/SR60 – Explosion Proof Loudspeaker, Ringer, & Loudspeaker/Ringer

Guardian's SR40 and SR60 Explosion Proof units generate up to 110 dB. The SR40 can be ordered in ringer configurations of 12/24 or 120/230 volts AC and as a combination ringer/loudspeaker. The SR60 is a 60 watt loudspeaker used in high powered applications. Maintaining safety standards may require the use of special wiring conduits or other considerations.

RINGERS AND LOUDSPEAKERS RANGE

Guardian Telecom Loudspeakers & Ringers can be utilized for loudspeaker paging, or incoming ringing or both functions within one device. With our wide variety of products all applications can be met.

EXP/RL SERIES

Guardian's CE20 Explosion Proof Ringer is designed for use indoors and outdoors in hazardous areas where flammable gases, vapors or dust may be present. Guardian's SR40 Explosion Proof unit can be set-up as a loudspeaker for paging applications, loud ringer to signal incoming phone calls, or both functions can be combined in one device. Guardian's SR60 Explosion Proof unit is a high power paging loudspeaker.

APPLICATIONS

These telephones are designed for use in locations with the highest hazardous area classifications such as:

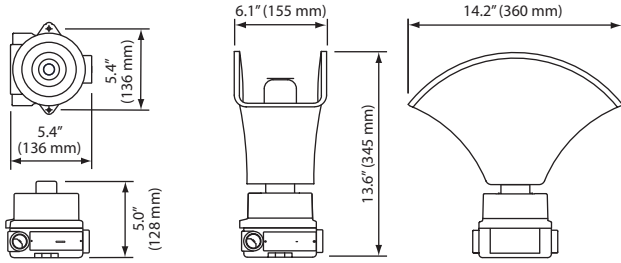
- | | | |
|------------------------------|---------------------------------------|-----------------|
| Petroleum Refineries | Chemical Plants | Ships |
| Power Generation Facilities | Drilling Rigs | Mines |
| Grain Handling Facilities | Gas Plants | Aerospace Sites |
| Bulk Fuel Loading Facilities | Munitions Storage and Production | |
| Sewage Plants | Paint or Solvent Manufacturing Plants | |
| and more ... | | |



tough. trusted. true.



OVERALL DIMENSIONS & ENGINEERING SPECIFICATIONS CE20 Line Powered Explosion Proof Ringer



ELECTRICAL REQUIREMENTS - Line Powered

Ringer Sensitivity 40 -100 V, 16 - 25 Hz
 Ringer Equivalence Number 04.A/0.8B

ELECTRICAL PERFORMANCE

CE20 Line Powered Ringer c/w Projection Horn 90 +/- 3 dB
 CE20 Line Powered Ringer w/o Projection Horn 75 +/- 3 dB

MECHANICAL SPECIFICATIONS

Body Construction Copper Free Cast Aluminum Cover and Base With Epoxy Powder Coat
 Flame Arrestor Sintered Bronze

W/O Projection Horn

Net Weight 3.5 lbs (1.6 kg)
 Shipping Weight 4.0 lbs (1.68 kg)
 Shipping Dimensions (L x W x D) 9.0" x 6.0" x 5.5" (229 x 153 x 140 mm)

C/W Projection Horn

Net Weight 6.0 lbs (2.7 kg)
 Shipping Weight 7.5 lbs (3.4 kg)
 Shipping Dimensions (L x W x D) 16.0" x 10.5" x 9.5" (407 x 267 x 242 mm)

ENVIRONMENTAL

Enclosure Type see "COMPLIANCE" below
 Temperature -40° to +140°F (-40° to +60°C)
 Humidity 0 - 95% RH Non-Condensing

COMPLIANCE

CE20 c/w Projection Horn – P7021

CSA LR 65547-31
 Class I, Division 1 Groups B, C, & D;
 Class I, Zone 1, Group IIB +H2;
 Class II Division 1, Groups E, F & G;
 Class III; T5. Type 4X Enclosure

UL File #: E214408
 Class I, Division 1 Groups B, C, & D;
 Class I, Zone 1, Group IIB +H2;
 Type 4X

CE20 w/o Projection Horn – P7020

CSA LR 65547-31
 Class I, Division 1 Groups B, C, & D;
 Class I, Zone 1, Group IIB +H2;
 Class II Division 2, Groups F & G;
 Class III; T5

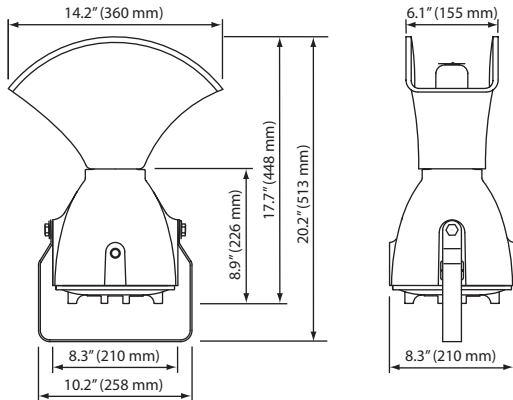
UL File #: E214408
 Class I, Division 1 Groups B, C, & D;
 Class I, Zone 1, Group IIB +H2;

ORDERING INFORMATION

Warranty: One year parts and labor

| Order No. | Description |
|-----------|--|
| P7020 | CE20 Line Powered Ringer |
| P7021 | CE20 Line Powered Ringer c/w Projection Horn |

OVERALL DIMENSIONS & ENGINEERING SPECIFICATIONS SR40/60 Explosion Proof Speaker, Ringer, Speaker/Ringer



PERFORMANCE AS A SPEAKER

Frequency Response 250 - 7500 Hz
 Power Rating
 SR40 70V 30 W max
 SR40 70V and ringer 15 W max
 SR40 16 Ohm 40 W max
 SR60 70V 60 W max
 SR60 16 Ohm 60 W max
 Sound pressure level (SPL) 110 dB at 1.0 meter max

MECHANICAL SPECIFICATIONS

Body Construction Copper Free Cast Aluminum And Powder Coated
 Flame Arrestor Sintered Bronze
 Projection Horn ABS
 Net Weight 20.0 lbs (9.0 kg)
 Shipping Weight 22.0 lbs (10.0 kg)
 Shipping Dimensions (L x W x D) 12.0" x 12.0" x 16.0" (305 x 305 x 407 mm)

ELECTRICAL

Input Voltage/Fuse Rating 12VAC/1A, 24VAC/.75A, 120VAC/5A or 230VAC/.25A
 Duty Cycle 50%

ENVIRONMENTAL

Enclosure Type see "COMPLIANCE" below
 Temperature -40° to +140°F (-40° to +60°C)
 Humidity 0 - 95% RH Non-Condensing
 Dust Resistant Gasketed & Threaded Joints

COMPLIANCE

CSA LR 65547-27
 Class I, Division 1 Groups B, C, & D;
 Class I, Zone 1, Group IIB +H2; Type 3R
 Class II Division 1, Groups E, F & G; Class III
 Temp Code: T5 for SR40 Models
 Temp Code: T3C for SR60 Models

UL E165888
 Class I, Division 1 Groups B, C, & D;
 Class I, Zone 1, Group IIB +H2; Type 4X
 T6 (Exception T4 on 120 VAC & 230 VAC Models)
 TAMB: -40° to +104°F (-40° to +40°C)

ORDERING INFORMATION

Warranty: One year parts and labor

| Order No. | Description |
|-----------|--|
| P7240 | SR40, 24 VAC, Ringer |
| P7241 | SR40, 24 VAC, 15 Watt Paging Loudspeaker/Ringer |
| P7243 | SR40, 230 VAC, Ringer |
| P7244 | SR40, 230 VAC, 15 Watt Paging Loudspeaker/Ringer |
| P7245 | SR40, 30 Watt 70V Paging Loudspeaker |
| P7246 | SR40, 30 Watt, 70V Paging Loudspeaker with DC Filter Circuit for monitoring line integrity |
| P7247 | SR40, 30 Watt, 16 Ohm Paging Loudspeaker |
| P7248 | SR40, 12 VAC, Ringer |
| P7249 | SR40, 12 VAC, 15 Watt Paging Loudspeaker/Ringer |
| P7250 | SR40, 120 VAC, Ringer |
| P7251 | SR40, 120 VAC, 15 Watt Paging Loudspeaker/Ringer |
| P7260 | SR60, 60 watt, 70V Paging Loudspeaker |
| P7262 | SR60, 60 watt, 16 Ohm Paging Loudspeaker |



GUARDIAN TELECOM LTD.
 Calgary, Alberta, Canada
 Telephone: 403 258 3100 Facsimile: 403 255 2595
 1 800 363 8010 (North America)
 info@guardiantelecom.com | www.guardiantelecom.com

