



# OGP SERIES

## Outdoor Call Help Point Tower

### OGP SERIES OUTDOOR HELP POINT TOWER

• OGP-10 - 9' Free Standing Tower

#### FEATURES and BENEFITS

- Unique anti-condensation system prevents build up of moisture internally within the pole to protect components.
- 316 SS base to prevent external corrosion and promote long life on the pole finish.
- Integrate DIN mounting system to allow for 3rd party equipment (ie: media converters, switches ...).
- Removable sealed service panels (with security screws) to access internal systems.
- Large radius rounded corners for impact safety.
- Panel area has overhead LED illumination.
- Panels are reverse mounted to eliminate exposed screws.
- Large bright beacon – 360° viewable. Operational modes are user selectable.
- High impact beacon lens, UV protected for long life.
- Supports optional overhead camera mount.
- Dual coating; Safety Yellow exterior UV protected, with corrosion resistant primer.
- Large visible signage on 2 sides. Content user definable.
- Panel area supports Guardian's HDE Series of Analog and VoIP Help Point hands-free devices.

- **HDE SERIES ANALOG HEAVY DUTY EMERGENCY & PUBLIC ACCESS TELEPHONES**

- HDE-30 – Recessed/Single Emergency.
- HDE-31 – Recessed/Single Call Button & 12 Digit Keypad.

- **HDE-V SERIES VoIP HEAVY DUTY EMERGENCY & PUBLIC ACCESS TELEPHONES**

- HDE-30-V – Recessed/Single Emergency.
- HDE-31-V – Recessed/Single Call Button & 12 Digit Keypad.

#### OGP RANGE OF HELP POINT DEVICES

Guardian's OGP (On-Guard Protector) RANGE of Heavy Duty Emergency Industrial Help Point Telecommunication Devices and Towers, combined with Guardian's HDE Series of Analog and VoIP Help Point hands-free devices are intended for use in public areas where direct / emergency assistance or hands-free communication is required.

#### HDE SERIES OF TELEPHONES

Guardian's HD SERIES Heavy Duty Emergency Industrial Telephones the Guardian HDE SERIES (Analog) and HDE-V SERIES (VoIP) telephones provide a two-way link to emergency, access or information assistance through full-duplex phone transmission. A call may be initiated from the phone by pushing the button which routes the call to its assigned extension. These phones also provide the capability of monitoring the status of each unit from a remote location, informing personnel of a malfunction.

#### APPLICATIONS

The OGP Outdoor Help Point Tower was designed to provide reliable communications in environments subject to vandalism, moisture, dust and corrosive chemicals such as:

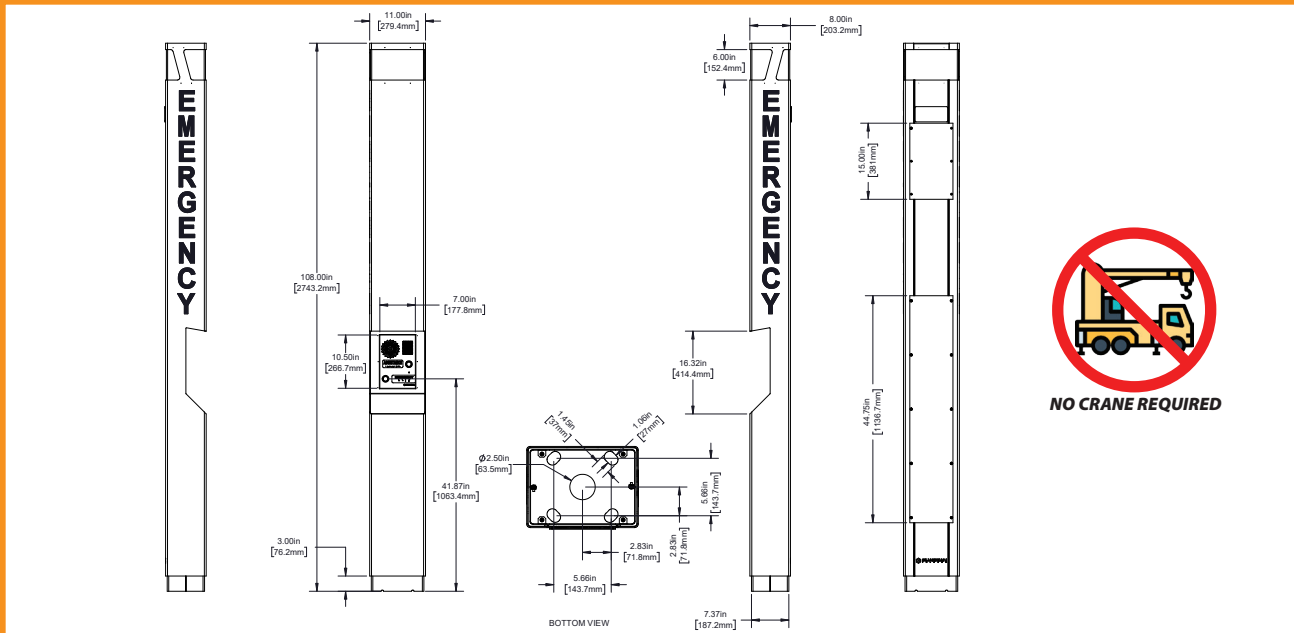
- |                     |                        |
|---------------------|------------------------|
| Universities        | Public Access Areas    |
| Business Campuses   | Parks                  |
| Building Entrances  | Plant Entry Gates      |
| Parking Facilities  | Amusement Parks        |
| Sporting Facilities | Senior Citizen Housing |
| Transit Authorities | Medical Centers        |
| Industrial Parks    | and more ...           |



tough. trusted. true.



## OVERALL DIMENSIONS



OGP SERIES OUTDOOR HELP POINT TOWER

## ENGINEERING SPECIFICATIONS

### ELECTRICAL REQUIRMENTS

Beacon/Lighting:

\*120VAC : Standby Mode ~170mA  
Call Active Mode ~350mA

If using SIP/IP Communications  
If using analog Communications

24VDC@1A or POE 802.11aF\*  
Telephone line powered and/or +12VDC @ 0.5A\*\*

\*Power consumption specifications are measured values based on the OGP configured with a standard VoIP HDE, Front Panel Lighting and Guardian Telecom's Emergency beacon and a 91% 24VDC Power supply. Factors which will impact the current specification may include: DC power supply efficiency, additional load devices (ie: Camera, HID Card reader, etc) if powered using the same supply. Contact Guardian Telecom for IP power requirements based on options and configuration for IP Products.

\*\*Adding supplemental power to the analog communications products provides additional features and capabilities.

### MECHANICAL SPECIFICATIONS

Pole Material

Cold Rolled Steel – 11 Gauge

Pole Base Material

316 Stainless Steel – 16 Gauge

Weight:

120lbs, 54.5Kgs

Overall Dimensions

11"W x 8.1"D x 108"H  
279mm x 206mm x 2743mm

Communication Panel Area

11"W x 12.9"H

Beacon Viewable Area

279mm x 327mm

Access Panels

6"H 152mm

Integrated DIN Rail

Qty 2 – Lower (42") and Upper (19")

Distance from DIN Rail to Back Box

STD 2" - 19" length  
3.33" 84.5mm

### PRODUCTS SUPPORTED

#### HDE SERIES ANALOG HEAVY DUTY EMERGENCY & PUBLIC ACCESS TELEPHONES

HDE-30 – Recessed/Single Emergency

HDE-31 – Recessed/Single Call Button & 12 Digit Keypad

#### HDE-V SERIES VoIP HEAVY DUTY EMERGENCY & PUBLIC ACCESS TELEPHONES

HDE-30-V – Recessed/Single Emergency

HDE-31-V – Recessed/Single Call Button & 12 Digit Keypad

Industry Standard Insert Panels easily accepted.

### ENVIRONMENTAL

Pole

Base

Painted surfaces

Exterior finish

Telecom Panels

Electronics:

IP-65 Weather proof rating

316 Stainless Steel.

Powder coat with dual coating, corrosion resistive primer.

UV stabilized.

316 Stainless Steel

-40C to +70C

### COMPLIANCE

CSA/UL

Weather Rating

ADA

Refer to insert datasheets for communications device compliance

62368-1 – Safety

IP-65 / Nema 4

### ORDERING INFORMATION

Warranty: 3 year parts and labor

Order No.	Description
P9063	OGP-10 9' Free Standing Tower

Options	Description
OHCM	Overhead Camera Mount
HL	Hearing Loop Antenna
	*External Antenna Required - Contact Guardian Telecom

Distributed by:



GUARDIAN TELECOM, a division of CIRCA ENTERPRISES INC.  
Calgary, Alberta, Canada  
Telephone: 403 258 3100 Facsimile: 403 255 2595  
1 800 363 8010 (North America)  
info@guardiantelecom.com | www.guardiantelecom.com

Circa